

Shelby's Market Vision

Shelby's historic, mixed-use central business district offers specialty retail, unique dining and a depth of services in a friendly, hometown atmosphere. The community's growing industrial base provides family wage jobs necessary for a stable and sustainable economy.

Shelby is a vibrant community filled with unique businesses and industries that complement existing and emerging business clusters, enhance the local economy, and improve the community's quality of life.

Shelby has a market of over 25, 000 residents with-in a three-county region.

Contact Us

Mayor Larry J. Bonderud
Phone: (406)434-5222/450-5196
E-mail: larry@shelbymt.com
Web: www.shelbymt.com

Community Development
Lorette Carter
Phone: (406) 424-8799/450-4067
E-mail: shbccdc@3rivers.net

Shelby Area Chamber of Commerce
Phone: (406)-434-7184
E-mail: shelbycoc@3rivers.net
Web: www.shelbymtchamber.org



City of Shelby

Mayor Larry J. Bonderud
Phone: (406)434-5222/450-5196

Find Yourself in Business in Shelby!



CITY OF SHELBY

A guide to business development opportunities in Shelby, Montana.

Table of Contents

Shelby’s Market Forecast.....1

Property Potential.....2

402 Front Street

118 4th Street

130 4th Street

Property Potential.....3

222 Main Street

400 Main Street

335 Main Street

The Port of Northern Montana.....4

Community Profile.....5

Shelby’s Market Vision.....6

Contact Us

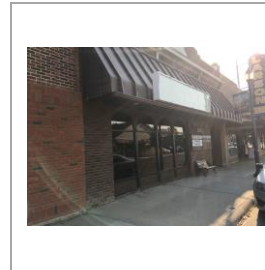
Property Potential

Office Space ~ 402 Front Street



Built in 1996, this block building is perfect to design your own office space within Shelby’s downtown business district. For additional information, contact Jana Richards at (406) 560-5024 or e-mail her at jrichards.realestate@yahoo.com.

Main Street Store Front ~ 201 Main Street



This Main Street space is 1,025 sq. ft. with Main Street store front. Perfect for office or retail in this highly traffic area. Monthly lease is \$725 which includes utilities. For more information, contact Jim Larson at (406) 434-5188.

Commercial Space ~ 202 Main Street



The 1,000 sq. ft. space has updated fixtures; handicapped accessible; public area/separate office space/storage room. The lease is negotiable. Contact Gordon Smedsrud at (406) 424-8080, (406) 460-7653 or email at gordon@tiberagency.com.

Community Profile

Shelby is the county seat of Toole County. Located in north central Montana, Shelby is approximately 30 miles south of the Canadian border and about 80 miles east of Glacier National Park. The Burlington Northern Santa Fe east-west main line tracks pass through Shelby linking Chicago to Seattle, and Interstate 1-15 gives quick access to north and south destinations.

Shelby's geographical location makes it a natural transportation center. North into Canada, west to Pacific Coast, east to the Minneapolis-Chicago area or south on 1-15 to Los Angeles.

Education, Health, Recreational Facilities

Shelby boasts excellent community services. Grades K-12 are located in one central school campus. Primary care services provided at Shelby's Marias Medical Center & Marias Healthcare clinic; assisted living at Marias Heritage Center and elderly care facilities at Marias Care Center; private medical doctor, dentists, optometrists and chiropractic services. Recreation facilities include the Civic Center recreation facility; Shelby Swimming Pool, Roadrunner Recreation Trail, Marias Valley Golf Course, tennis courts, bowling, shooting sports, and fishing.

Amtrak

Daily train service both east and west bound. (406-434-5031)

Property Potential

Williamson Building ~ 222 Main Street



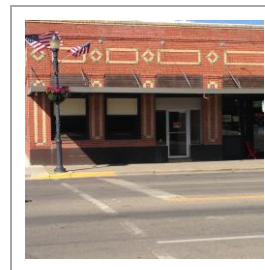
Located in the center of Shelby's Main Street business district, this 333 sq. ft. space is ideal for office or retail. \$600 monthly including utilities. Contact Larry Bonderud at (406)434-5222 or (406)450-5196.

Historic Rainbow Hotel ~ 400 Main Street



A corner stone of Shelby's Main Street business district, the historic Rainbow Hotel was built in 1922. This 13,000 SF building is ideal as a mixed-used property. Architectural report and development plan are available. Contact Mayor Bonderud at (406)434-5222 or (406) 450-5196.

Retail/Office Space ~ 335 Main Street



This downtown Shelby retail/office space is move-in ready! Approximately 1,800 square feet available on street level with storage space available in the basement. Minimal utility costs. For additional information contact Sandra Larson at (406)434-5112 or (406) 460-5112.

Shelby's Market Forecast

America's Western Crossroads

Shelby is a city breaking the mold in rural America; attracting young families by bringing new businesses, industries and family wage jobs.

“Shelby provides opportunities! Great jobs, a good school system, recreation, unique shopping ~ all in one small community.”

Oh the possibilities!

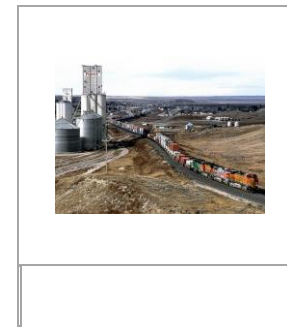
Bringing young professionals back home, Shelby has a strong reputation for bringing in family wage jobs so that young families can move back home or new families can move to our “home town” community.

New and existing industries include the Port of Northern Montana multi-modal facility/industrial park; Crossroads Correctional Center; Glacier and Rim Rock Wind Farms; Homeland Security and Border Protection Services; CHS, Inc.; Ryder Logistics; Humic Growth solutions; expansion of Shelby's lodging industry and expansion of several local commercial enterprises ~ all that bring family wage jobs to the community.

Almost 10,000 workers are employed within 45 minutes of Shelby, bringing tremendous economic impact to the community.

The Port of Northern Montana

Northernmost Inland Port Authority Serving the United States, Canada and Mexico!



Location Advantages:

- Burlington Northern Santa Fe access
- Access to all Class 1 railroads in North America
- Close proximity to Coutts, Alberta ~ Sweetgrass, Montana Port of Entry

Multi-Modal Facility

- 12,000 sq. ft. rail side warehouse with cross dock
- Bulk transload facilities
- 120 acre multi-modal facility
- 15,000 ft. loop track for transloading
- 14,000 ft. sidings
- Three foreign trade zone sites
- Expansion capabilities
- Ideal northern distribution and consolidation point